

© 2023 Valmont® Industries, Inc. All rights reserved. Valmont® Structures has a policy of continuous product improvement and development. As a result, certain changes in standard equipment, options, price, etc. may have occurred after the publication of this document. Some drawings and specifications may not be identical to current production. Valmont Structures reserves the right to change product design and specifications at any time without incurring obligations.



valmont 
STRUCTURES

28800 Ida Street
Valley, Nebraska 68064 USA

+1 941.402.3554 | +1 800.825.6668
facades@valmont.com

architecturalfacadesolutions.com

PARTNERS IN TRANSFORMATION – ARCHITECTURAL FACADES

valmont 
STRUCTURES



Contents

- 5 INTRODUCING VALMONT® STRUCTURES
- 6 ARCHITECTURAL FACADES PRODUCT LINE
- 7 FACADES
- 13 SUN SHADING
- 19 TRANSPORTATION & SAFETY
- 25 PARKING GARAGES
- 31 SYSTEMS
- 37 MATERIALS, FINISHES, PIC PERF
- 43 PRODUCTS
- 56 ATTACHMENT SYSTEMS

Partners in Transformation

At Valmont® Structures, we've been helping architects and designers around the world transform the look and feel of commercial structures for decades. We design and manufacture facades to help buildings make a unique statement while delivering new levels of functionality—such as shading, safety, ventilation or privacy.

Our facades revitalize dated structures and help parking garages actually enhance their surroundings. Sun shading structures offer building owners and occupants an opportunity to control sunlight, heat and airflow. The products that we've created for transit stops and walkways have elevated how people perceive communities.

At Valmont Structures, our partnerships are built on a foundation of trust. Trust that we share your vision. And trust that we can bring your vision to life—every time. Let us show you exactly how our solutions have been earning trust for over 60 years.



The Locker Product Line: Solutions for Any Situation

The Locker product line from Valmont® Structures was created from the simple idea that facades can and should offer more. More options to capture and express a creative vision. More choices in materials and finishes. More systems that simplify installation and maintenance. More control over budgets and installation timelines.

Since 1956, the product line has evolved to meet the changing needs of architects, engineers and contractors. The core benefits are:

FLEXIBILITY

Choices range from an extensive range of material including Perforated, Expanded, Woven mesh, Laser to Transit tension, backed with nearly unlimited combinations of perforations, profiles and finishes to achieve your design goals.

FUNCTIONALITY

Whether it's sun shading, ventilation, reducing noise or light pollution, protecting privacy, providing shelter or simply putting a new face on an old structure, facades from the Locker product line optimize both form and function.

SIMPLICITY

Proven attachment components are lightweight, simple to maintain and offer reduced installation times. These same components are also the backbone of our Atmosphere, Aurora and Transit Mesh facade systems.

DELEGATED DESIGN

Using your Autodesk REVIT® model, we provide 3D interactive solutions to verify design intent, demonstrate assembly and make budgeting and timeline development much more accurate.

The Locker product line is supported by the engineering innovation, industry leadership, global resources and manufacturing legacy of Valmont Structures.



Facades

Where personality and functionality merge to create new opportunity.

The Face Makes the First Impression

When you meet someone new, their face is what makes the first and strongest impression. At Valmont® Structures, we know the same is true for any building. That's why the facade partner you choose is so vital. You need someone who not only understands the intricacies of your unique vision but can also work alongside you to create it. A partner who not only offers materials such as perforated or expanded metal but backs them with the manufacturing experience and resources to bring those materials to life. You need a facade partner you can trust. You need Valmont Structures.

Facade Solutions Offer



PRIVACY / SECURITY

Our facades not only provide privacy from people trying to see in, they also provide security by enabling those who are inside to see out.



ENVIRONMENTAL CONTROL

Our materials can be custom-designed to match the size and profile of Facades can be optimized to control exposure to light, heat and airflow. Well-designed perforated panel systems help to control the comfort of the building's occupants as the sun moves throughout the day, and as seasons change throughout the year.



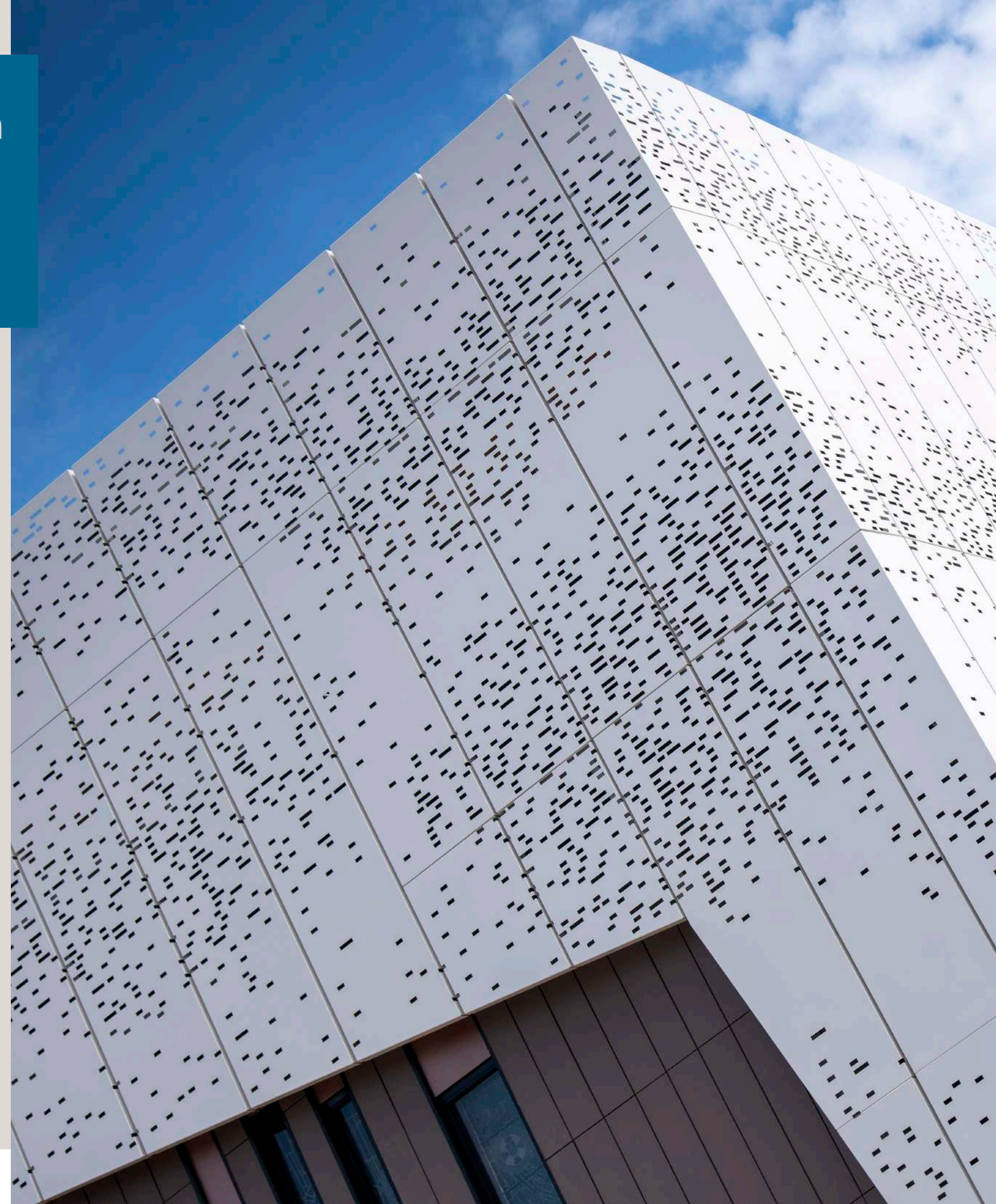
AESTHETIC OPTIONS

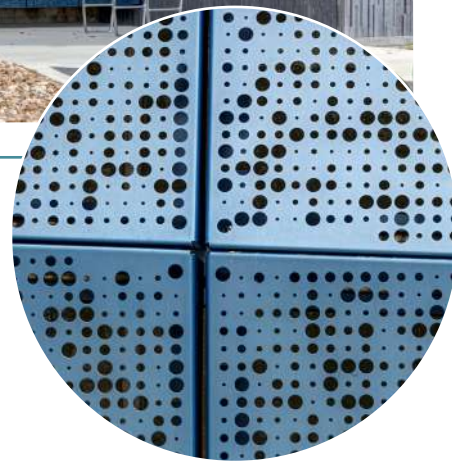
No matter which material you choose, Valmont® Structures can help you create a design to achieve any aesthetic vision.



STRUCTURAL PROTECTION

Facades from our Locker product line are lightweight and require minimal structural support to stay in place. What's more, their inherently porous design means they can help diffuse the impact of strong winds while also helping to shield the structure from extreme weather.





Brownsville Public Utility Board Façade

PRODUCT

Contour Perforated Panels, Aurora Attachment System

ARCHITECT

PERO Architects

The Brownsville Public Utility Board (BPUB) has played an important role in the city of Brownsville, Texas since 1960. We were tapped to provide a functional upgrade to its façade.

The Aurora system enabled a 1,145 square-meter Contour panel area, 3-millimeter (mm) perforated aluminum panels with 32mm diameter holes at 54mm centers. We used EB brackets to secure the facade in place with the frame.

Aurora allowed for exact engineering design calculations and shop drawing preparation. The system is the only one on the market that is fully customizable to meet any specific requirements and integrations.

The result was an intricate custom perforated design. We used the Interpon D2525 powder-coat system and 6mm aluminum top hats of varying sizes to create a uniquely creative façade. To help with the façade's durability against the Texas elements, we chose to use Custom Aurora extrusion anodized rails coated in a protective oxide layer made by an electrolytic process. This coating on the rails, coupled with the custom blue powdercoat on the panels, will help keep the façade looking like new.



Ed Robson Arena - Colorado College

PRODUCT

Custom Perforated Fins, Aurora Attachment System

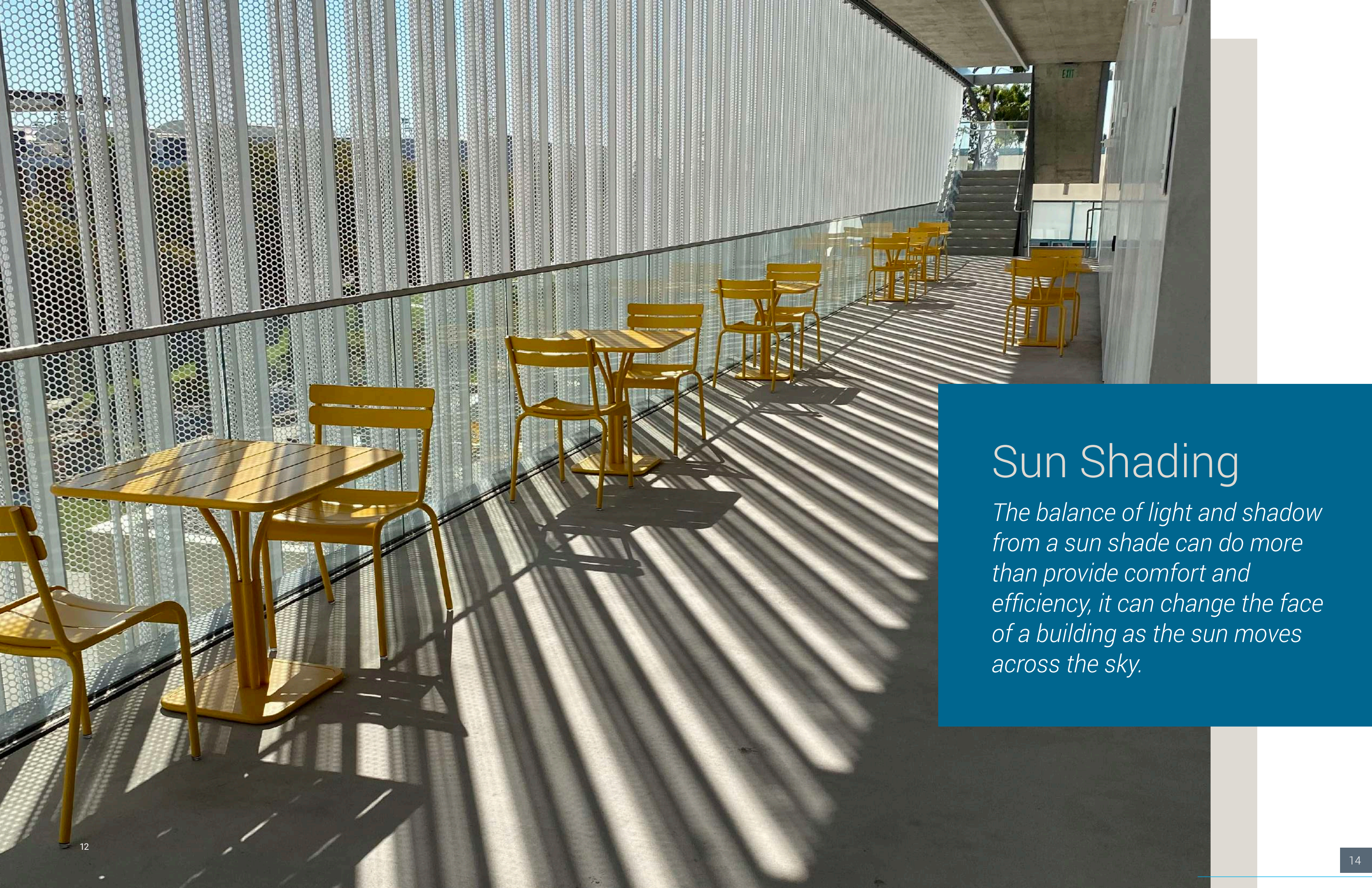
ARCHITECT

JLG Architects

In late 2021, Colorado College opened their new, multi-purpose, state-of-the-art, sustainable sporting event venue, the Ed Robson Arena. Intended to stimulate the area's blooming tourism industry, this facility boasts 120,000 square feet for competition space, seating, locker rooms, concessions, and much more. JLG Architects had a unique vision for the arena but needed to cater to Colorado College's commitment to sustainable design. They chose Valmont's innovative facade system to complement their design and create a more energy efficient arena.

Approximately 300 custom shade fins line the exterior of the arena, attached using our innovative Aurora rail. These fins not only add to the aesthetics of the arena, but they also allow for climate control within the building. Our sun shading facades have been shown to reduce energy costs anywhere from 5% to 25% depending on several factors including building size, climate and materials used.

Through our custom design, Valmont was able to provide a simple yet impactful solution to fulfill the designers' vision. Our Aurora Attachment System allowed SGH Concepts, the installers, to have production rates 3 times what was initially estimated. The unique cassetted system is highly customizable, allowing an unrivaled ability to successfully integrate with any project.



Sun Shading

The balance of light and shadow from a sun shade can do more than provide comfort and efficiency, it can change the face of a building as the sun moves across the sky.

Sun Shading Offers More Control

At Valmont® Structures, our passive climate control systems are anything but passive. Unlike other methods available to manage glare or heat, sun shading systems offer something more—control. Control over solar gain—less in the summer, more in the winter. Control over light—more in the morning, less in the afternoon. Control over the aesthetics, and the impression made by your structure.

Sun Shading Solutions Offer



REDUCED CLIMATE CONTROL COSTS

Sun shading facades have been shown to reduce heating and cooling costs anywhere from 5% to 25% depending on a number of factors including building size, climate and materials used.



VISUAL COMFORT / LIGHTING CONTROL

By reducing glare in some parts of a building and allowing light to enter others, sun shading facades provide the ultimate visual comfort by controlling glare, light contrast ratios, as well as occupant comfort from heat gain.



ARCHITECTURAL DIFFERENTIATION

A variety of materials, textures and imagery offer you the ultimate control over passive solar heating and cooling design. By choosing a sun shade facade from Valmont Structures, you get aesthetic options that allow your building to stand out, complement surrounding structures or blend in seamlessly.



DIRECTIONAL CONTROL

Depending on the orientation of your structure, the sun will have a different impact on each side of your building. Sun shading facades give you the flexibility to optimize sunlight. More shading for southern and western exposures, less for those facing north and east.





Loyola Marymount University School of Film and Television

PRODUCT

Custom Perforated Panels, Aurora Attachment System

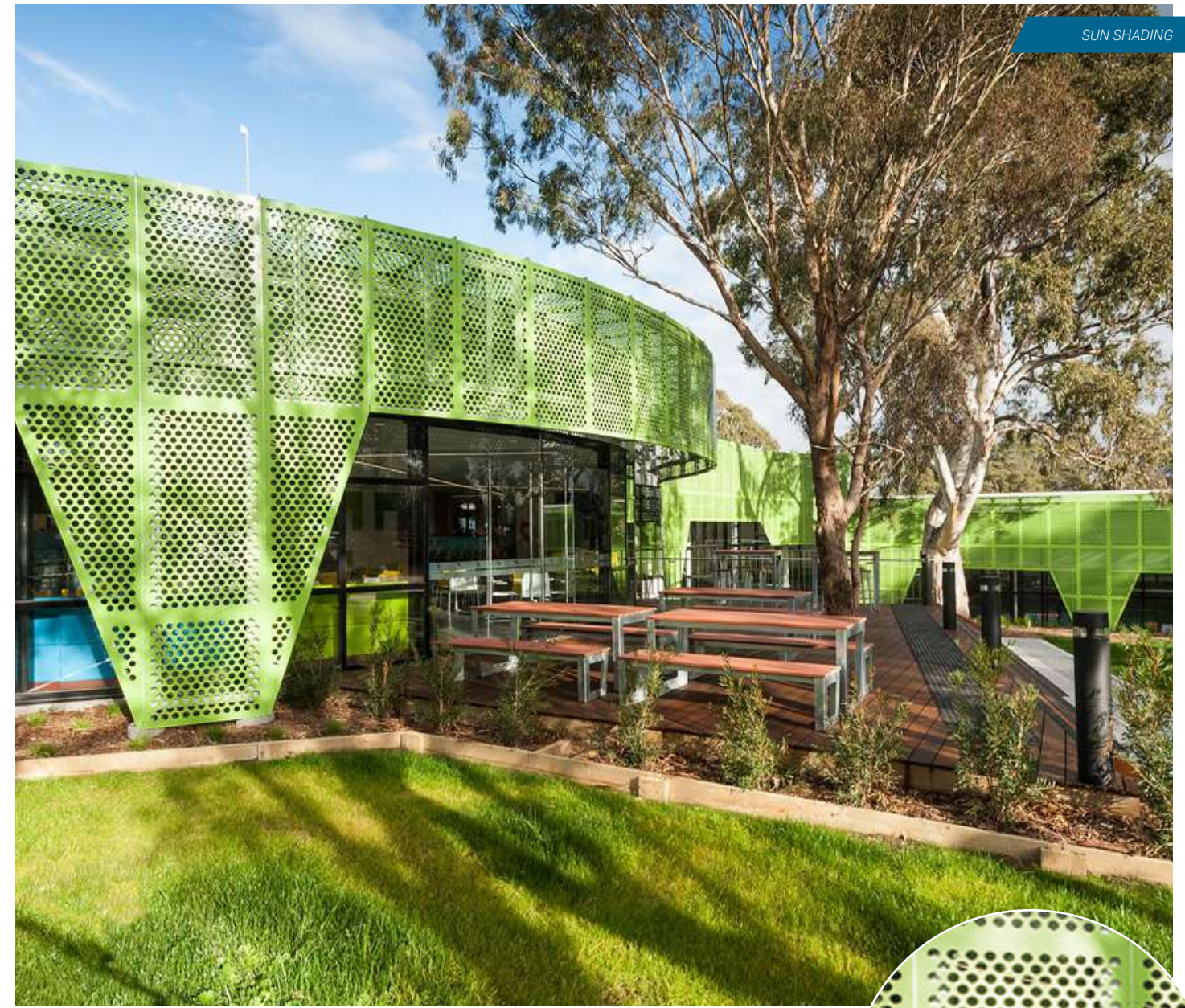
ARCHITECT

Skidmore, Owings & Merrill

2021 saw a lot of changes, and when it comes to architectural design for workspaces, this was especially true. Instead of enclosed, stuffy offices, LMU's School of Film and Television sought a different way to work. Organized as a campus within a building, designers envisioned an open culture that allowed staff and students to enjoy the outdoors while protected from the harsh California sun.

The vision was to create an adaptable environment with circulation paths and large communal spaces separated with perimeter glass, windows and a perforated metal veil. As a white-box project that featured a four-story academic building, we could accommodate a unique design that served both style and function. The façade needed to flow alongside the University's existing campus palette while considering the art and film students inside.

Perforated panels fold in and out across the face of the building, connected using an Aurora attachment system that suspends the façade seemingly in mid-air. Balancing the light and the acoustics of the building, our distinctive structure speaks to the multi-level creative flow of the students and staff inside.



Ivanhoe Aquatic Center

PRODUCT

Perforated metal

ARCHITECT

Peddle Thorp Architects

Renovating and refreshing this long-standing community hub meant upgrading the facilities to meet today's needs while still retaining the character of the existing building. The revamped Ivanhoe Center now offers a wider range of services and is fully accessible to more of the public.

Established trees have been preserved and integrated into the design, which is visually defined by its prominent use of perforated metal sheets offering sun protection for people using the facility.





Platforms
Sunshine Road

Next Train	Destination
11:10	CITY LOOP ALL EX
11:30	CITY LOOP ALL EX
11:13	SUNBURY STOPS A
11:33	WATERGARDENS STU

Transportation & Safety

An investment in quality walkways and transit stops can influence the perception and reality of any community.

Safe and Comfortable can also be Functional and Fun

Transit stops and pedestrian walkways not only reflect the culture of the city, but they can also be tailored to express the individuality of a specific neighborhood. They are a source of safety and pride for citizens. They add to the experience for visitors. At Valmont® Structures, we understand the importance a transit stop has in attracting riders, how a safe and welcoming walkway will encourage visitors to explore an area, and how both of these things build your local brand and contribute to your economic development.

Transportation & Safety Solutions Offer



SAFETY & COMFORT

Facades and other products from the Locker product line can help ensure pedestrian walkways and transit stops seamlessly incorporate proper lighting, comfortable resting/waiting areas, ventilation and shelter from the elements.



COMMUNITY / CULTURAL ENHANCEMENT

The variety of materials, colors, perforation options, etc. ensure that pedestrian walkways and transit stops add to the aesthetic and culture of any neighborhood.



ECONOMIC DEVELOPMENT / COMMUNITY BRAND BUILDING

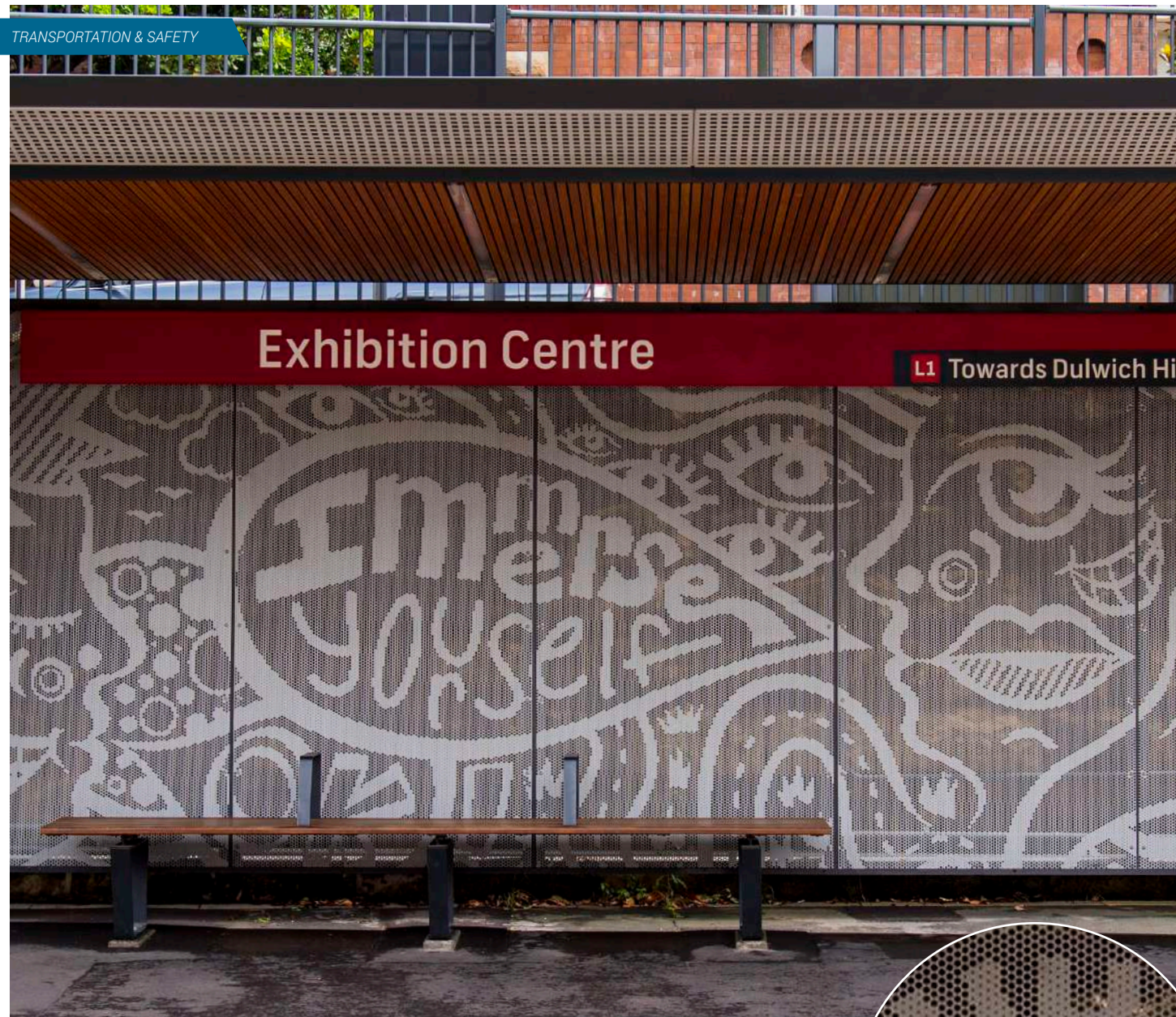
Public transportation is one of the few places where people directly engage with a local government service. The transit stop is the first place where riders connect with public transportation. By helping them get the most from that experience, we also help you get the most economic benefit.



FUNCTIONAL INTEGRATION

The flexibility of our facades means they can do more than offer visual appeal, they can become critical to the functionality as well. This can include the incorporation of a simple signage, posted maps and schedules, and wayfinding or local area information.





Exhibition Centre

L1 Towards Dulwich Hi

Light Rail

PRODUCT

Pic Perf

ARCHITECT

Architecture & Access (John Holland)

The stops along Sydney, Australia's inner west light rail line were recently overhauled to more accurately reflect the surrounding suburbs. Segments of this line have been used since the 1850s, and designers needed to produce an aesthetic that paid homage to the history of the line while at the same time looked to Sydney's future as a cultural hub.

The light rail project made use of Pic Perf products for the weather shielding of the stops. Utilizing eye-catching and stylized graphics that promote the culture and history of each area, the designers have successfully created a unique aesthetic that makes this light rail line stand out among the rest.



Juliette Cycleway Overpass Bridge

PRODUCT

Powder Coated Woven Wire

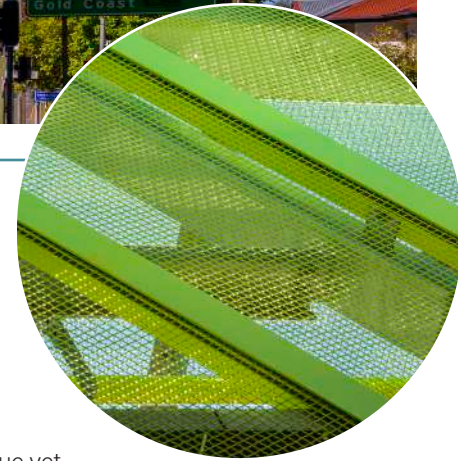
ARCHITECT

Belconnen Steel

Brisbane's diverse range of bikeways makes exploring the city on two wheels a firm favorite for locals and tourists alike. As part of an upgrade to this cycle network, the Juliette St. Bridge Cycleway Overpass was selected for renovation.

Each bridge along the course offers a different aesthetic, so the emphasis was on creating a unique yet functional overpass that would draw the eye but also stand the test of time. The project managers decided on a high-quality woven wire to ensure the bridge had a long life span as well as strong visual credentials.

As a finished build, the Juliette St. Bridge Cycleway Overpass stands out. The woven wire mesh enables cyclists to look out at the city around them, while providing an important safety barrier as the track crosses the road beneath.





Parking Garages

An urban necessity has now become a design opportunity.

Helping Parking Garages Create Community

Gone are the days when parking garages were accepted as a practical solution for the need to park a large number of cars in landlocked urban environments. Today, Valmont® Structures is helping show architects and designers alike how parking garages can be transformed into a structure that enhances its surroundings while adding new benefits such as protection of pedestrians and their vehicles as well as reductions in light pollution.

Parking Garage Solutions Offer



SAFETY

Safety begins by protecting people as they move in and out of the facility and keeping vehicles protected when they're parked. The Aurora system from our Locker product line features a tested vehicle safety barrier and integral facade attachment system – all supplied as a complete engineered solution.



EFFICIENCY

Movement of people and vehicles into and around the parking garage is paramount to efficiency. We believe efficiency also means designing and manufacturing structural components that stand up to the elements and are easy to maintain.



VENTILATION

Ventilation of automotive exhaust and other vehicle-related contaminants is vital to the health of the parking public, and for meeting code mandated open-air requirements. But it also extends to keeping facilities cool in the summer and minimizing cold winter winds.



AESTHETIC VALUE

Whether new construction or retrofit, our facades offer you the opportunity to create nearly any visual. This ensures the parking garage is adding to the visual appeal of the neighborhood and the larger urban cityscape.





Bungan Lane

PRODUCT

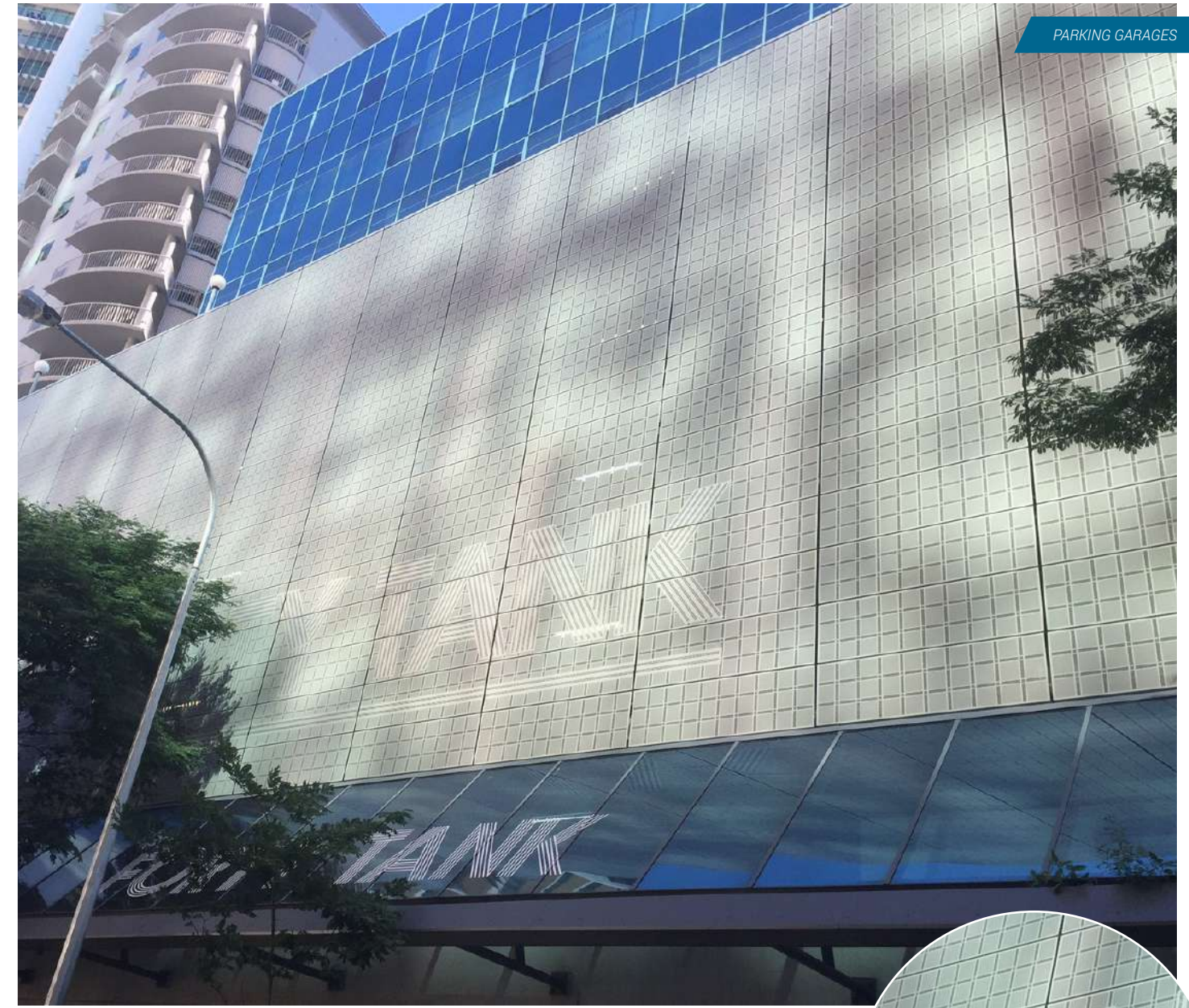
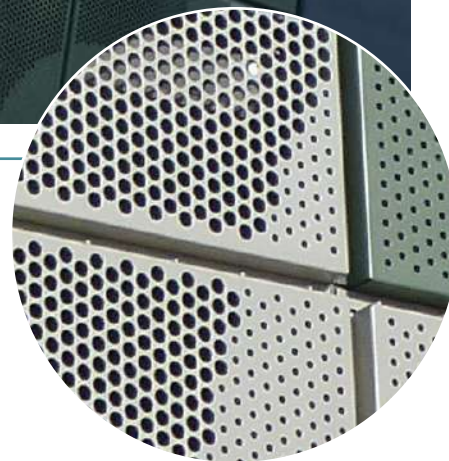
Pic Perf

ARCHITECT

Antoniades Architects

The Bungan Lane Car Park in the town center of the Mona Vale community of Sydney, Australia, uses a combination of perforated metal and solid precast concrete panels to create the building's distinctive look. The perforated metal provides natural light to the interior while still maintaining security and high, open areas for ventilation.

The Pic Perf solution was used to add a whimsical and organic look to the parking garage, a type of building that can otherwise look utilitarian and dull. The round bubble-like design punched in the metal contrasts with the building's angular lines and rectangular panels.



Tank Street

PRODUCT

Atmosphere and Pic Perf

ARCHITECT

WMK Architects

As part of a refurbishment that included rejuvenating the foyer and adding a cafe, WMK Architects designed a new frontage for the office tower at 40 Tank Street in Brisbane, Australia. Atmosphere system panels from our Locker product line were used for the facade that sheltered its parking levels, and the Pic Perf perforation technique was used to give it a bold rebranding.

Atmosphere was chosen in part because of its excellent ventilation and sun shading characteristics, but also because of its easy installation. The building's busy central business district location added an extra challenge to the project as the facade had to be erected quickly. Thanks to Atmosphere's swift constructability, stacks of panels were attached within a few hours.





Systems

We prepackaged some of our most popular screening products with our proven attachment systems to simplify design and installation.



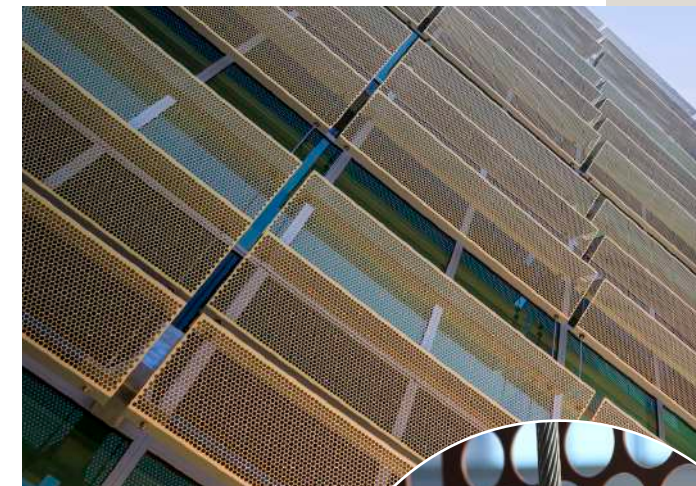
Ease and Simplicity

Available as a complete engineering package, our Atmosphere, Aurora and Tension façade systems were created to help simplify choice, shorten lead times and simplify installation. All the while, these systems offer you the design flexibility and functionality that Valmont® Structures solutions are known for.



The Atmosphere System

The Atmosphere system from our Locker product line offers a simple solution for those who need a visually striking facade.



Saving you effort and money, Atmosphere provides solar shading and visual screening, while fulfilling your desire for striking design.

Atmosphere facade panels come in a range of design options to match nearly any of your design specifications. Our engineering team tailors each installation to your requirements, taking building location and orientation into account. Once your panels have been designed and produced, they are installed on tensioned stainless steel cables. Panels are delivered to site, ready for fast installation, whether they cover the entire building face or are placed in targeted areas.

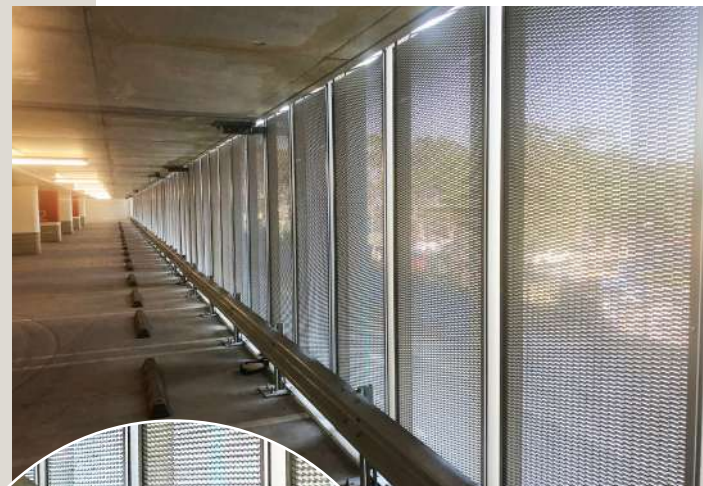


The Aurora System

The Aurora system from our Locker product line is a unique cassetted system that is compatible with expanded or perforated metal.

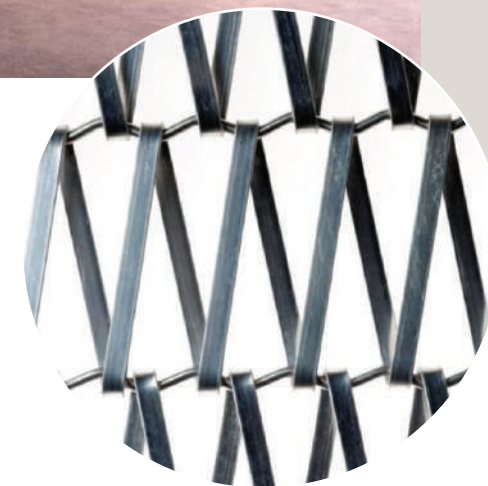
The Aurora system allows for these materials to be integrated in a car parking application or facade and is the only system of its kind on the market that is capable of integration with a vehicle safety barrier. Its permeable surface allows for optimum airflow, safety and constructability. Aurora offers a unique balance of high functionality with an outstanding aesthetic outcome.

Aurora is a highly customizable system that can be adjusted to meet any specific requirements, allowing an unrivaled ability to successfully integrate with any project. Custom design options allow you to tailor the facade with nearly any image or design, while reducing the light and noise pollution commonly associated with parking garages.



Tension System

At Valmont® Structures, we know that making a bold statement in an exterior space doesn't always require a custom facade. Sometimes, it needs the subtle touch. That's why we created the Tension system.



To complement a variety of structure designs, Transit Mesh is manufactured in a variety of different shapes. Further flexibility can be found in the materials that are available in Transit Mesh, including stainless steel and brass. Regardless of how you use Transit Mesh, there is also a full range of attachment options available to ensure it performs exactly as expected.



Materials

*The elements that bring
your vision to life.*

Our Potential is as Big as Your Imagination

At Valmont® Structures, we feel the most important thing we can offer is choice. A wide variety of materials, profiles and finishes mean more opportunities to bring your vision to life. And if you still don't see what you're looking for, we'll find a way to make it for you.

Materials & Finishes Solutions



PERFORATED

Perforated metal sheets are manufactured by using small perforations to create stunning architectural designs, while allowing for maximum airflow and enhanced natural lighting. Hole size, shape and pattern are tailored to your specifications and enhanced with three dimensional profiles like those offered in Pic Perf Directions.



EXPANDED

Metal mesh can be custom-designed to match the size and profile of paneling you want. Larger mesh profiles encourage greater light and airflow for interior spaces. Exteriors can benefit from louver-shaped profiles which provide sun shading, keeping your structure cool and preventing sun damage.



WIRE

Our wire mesh curtains couple privacy with an open flow, and also provide a modern visual edge. This makes them ideal for glare screening. Curtains can be manufactured in stainless steel, brass or aluminum from our broad portfolio of wire profiles, mesh thicknesses and weave options—all customizable to your specifications.



CUSTOM FINISHES

Powder or liquid coat, anodizing, electro-polishing or galvanizing can help add color and texture to your design along with the type of protection that will help ensure your vision can stand up to the tests of time and the elements.





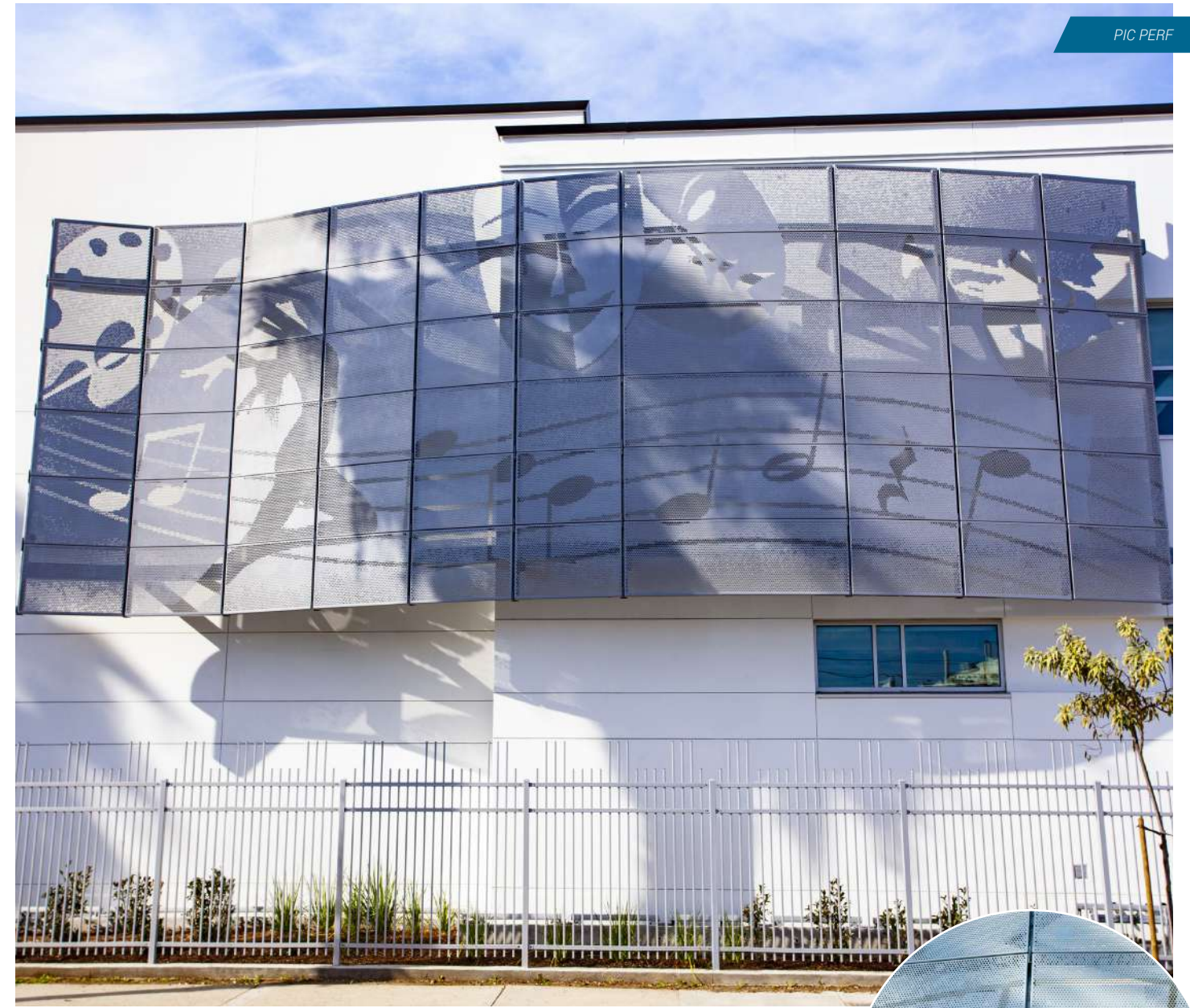
WALGA Council

PRODUCT: Pic Perf and Atmosphere
ARCHITECT: Hassel

The Western Australia Government Association (WALGA) needed facades that were aesthetically appealing, environmentally sustainable and embodied the local character of Western Australia.

To achieve this eco-friendly goal, we recommended Atmosphere. Comprised of lightweight, folded, perforated panels and stainless steel cables, the solution reduces the amount of sunlight that hits buildings by up to 78%, drastically decreasing power consumption expenses.

Delivering attractive visual features, we also used Pic Perf, a versatile product that allows us to recreate any image on exterior facades. WALGA's design leaders decided they wanted to have the Kangaroo paw, the floral emblem of Western Australia, rendered through Pic Perf, giving the facility an inviting tone.



Renaissance High School for the Arts

PRODUCT: Pic Perf
ARCHITECT: Ghataode Bannon

As part of an expansion project, Renaissance High School for the Arts in Long Beach, CA was looking for an innovative and artistic way to make one of their school buildings stand out.

After seeing our vast range of customization options and custom fabrication achievements, the school chose to utilize Pic Perf panels made of powder-coated aluminum. The panels form two large murals, which are not only visually impactful but also practical since the school's name can be seen from afar. Furthermore, thanks to Pic Perf, the school's focus on arts can be enjoyed both inside and outside the buildings.

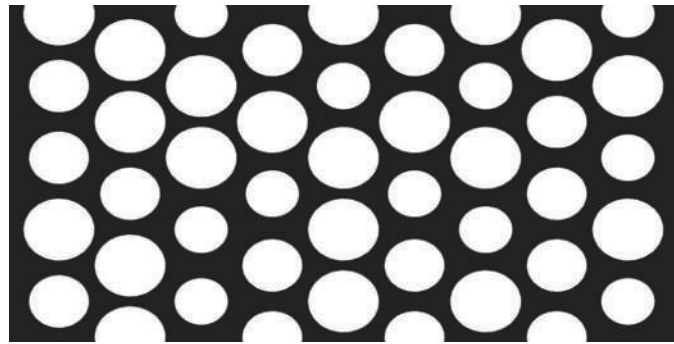




Products

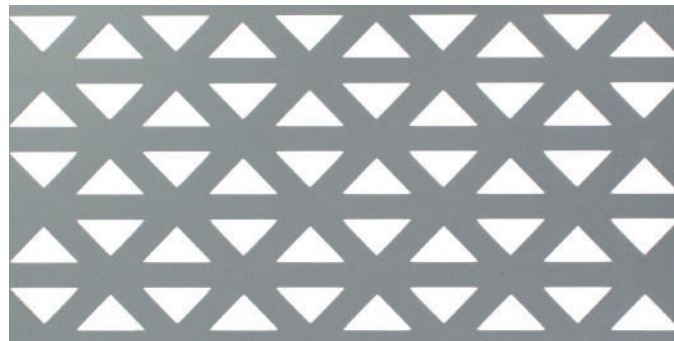
We offer a wide array of colors, styles and materials to bring your vision to life. And if you still don't see what you're looking for, we'll create it for you.

AERO



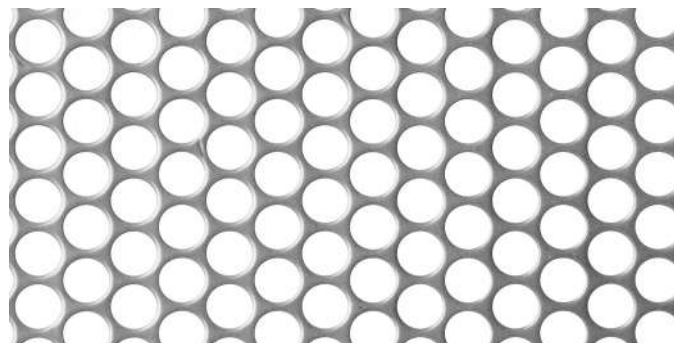
MATERIAL Aluminum
MAX WIDTH 60" (1500mm)
OPEN AREA 56%
THICKNESS 0.125" (3.0mm)
APPLICATIONS Parking Garage Screens, Cladding & Facades

AZTEC



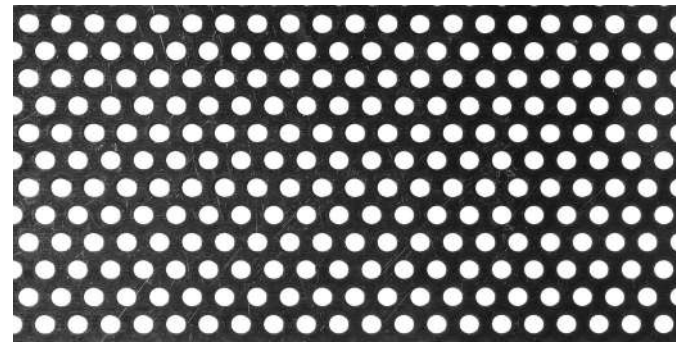
MATERIAL Aluminum
MAX WIDTH 60" (1500mm)
OPEN AREA 28%
THICKNESS 0.125" (3.0mm)
APPLICATIONS Facades, Balustrade Infills, Decorative Panels, Ceiling Tiles & Partitions

CLARITY 800



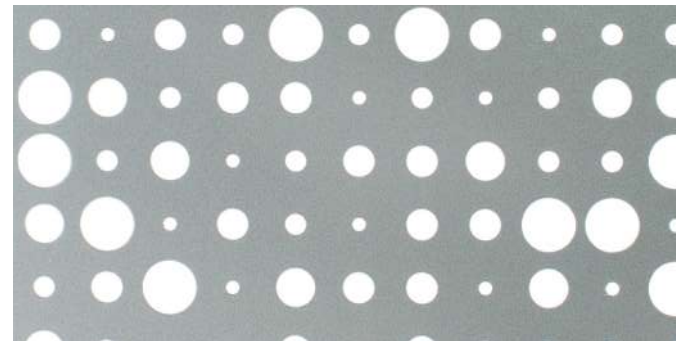
MATERIAL Aluminum, T304 (S/S), T316 (S/S)
MAX WIDTH 60" (1500mm)
OPEN AREA 62%
THICKNESS 0.04"-0.12" (1.0-3.0mm) (A)
 0.02"-0.06" (0.5-1.5mm) (S/S)
APPLICATIONS Parking Garage Screens, Facades, Security Screens, Infill Panels, Partitions & Balustrades

APOLLO 300



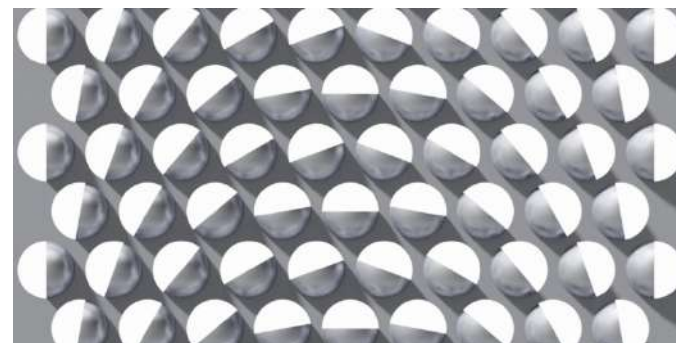
MATERIAL Aluminum T304 (S/S), T316 (S/S)
MAX WIDTH 60" (1500mm)
OPEN AREA 30%
THICKNESS 0.04"-0.12" (1.0-3.0mm) (A)
 0.02"-0.06" (0.5-1.5mm) (S/S)
APPLICATIONS Parking Garage Screens, Facades, Security Screens, Infill Panels, Partitions & Balustrades

CHAMPAGNE



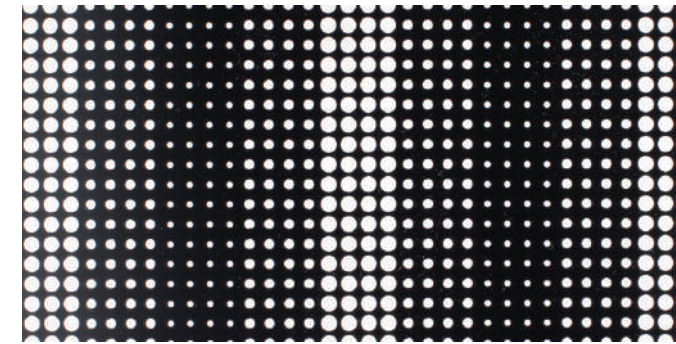
MATERIAL Aluminum
MAX WIDTH 60" (1500mm)
OPEN AREA 22%
THICKNESS 0.125" (3.0mm)
APPLICATIONS Balustrade Infills, Decorative Panels, Cladding, Facades, Ceiling Tiles, Privacy Screens & Partitions

DIRECTIONS



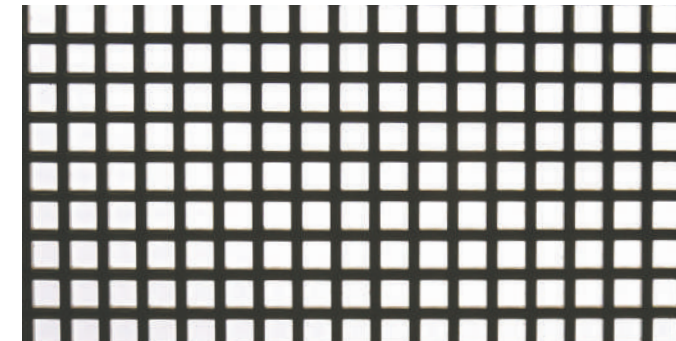
MATERIAL Aluminum
MAX WIDTH 55" (1400mm)
OPEN AREA 51%
THICKNESS 0.12" (3.0mm)
TYPE Raised 3D
APPLICATIONS Parking Garage Screens, Balustrades, Cladding & Facades

DOMINO 358



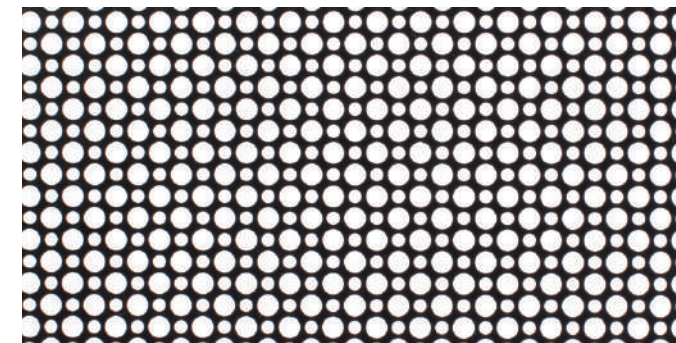
MATERIAL Aluminum
MAX WIDTH 60" (1500mm)
OPEN AREA 25%
THICKNESS 0.125" (3.0mm)
APPLICATIONS Facades, Balustrade Infills, Decorative Panels, Ceiling Tiles & Partitions

FORTE 800



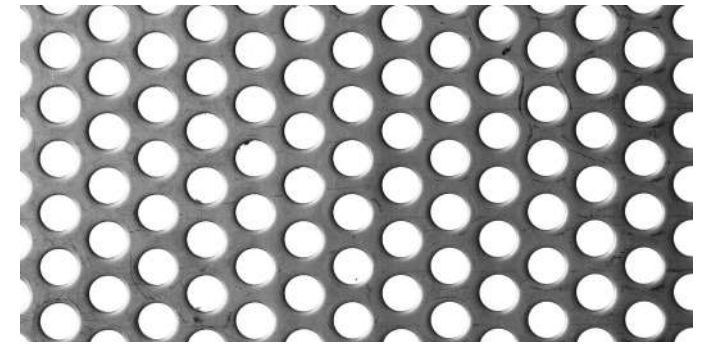
MATERIAL T316 (S/S), Steel, Aluminum
MAX WIDTH 47" (1200mm)
OPEN AREA 53%
THICKNESS 0.04"-0.08" (1.0-2.0mm) (S)
 0.04"-0.06" (0.9-1.5mm) (S/S)
 0.04"-0.12" (1.0-3.0mm) (A)
APPLICATIONS Decorative Screens (Internal or External), Fencing, Balustrade Infill, Partitions & Parking Garage Screens

MOROCCO



MATERIAL Aluminum
MAX WIDTH 60" (1500mm)
OPEN AREA 51%
THICKNESS 0.125" (3.0mm)
APPLICATIONS Parking Garage Screens, Facades, Balustrade Infills, Decorative Panels & Ceiling Tiles

ECLIPSE 600



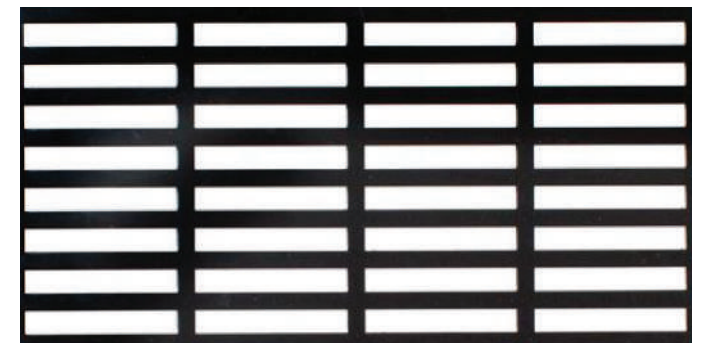
MATERIAL Aluminum, T304 (S/S), T316 (S/S)
MAX WIDTH 60" (1500mm)
OPEN AREA 40%
THICKNESS 0.05"-0.24" (1.2-6.0mm) (A)
 0.04"-0.16" (0.9-4.0mm) (S/S)
APPLICATIONS Facades, Security Screens, Infill Panels, Partitions & Balustrades

HERRINGBONE



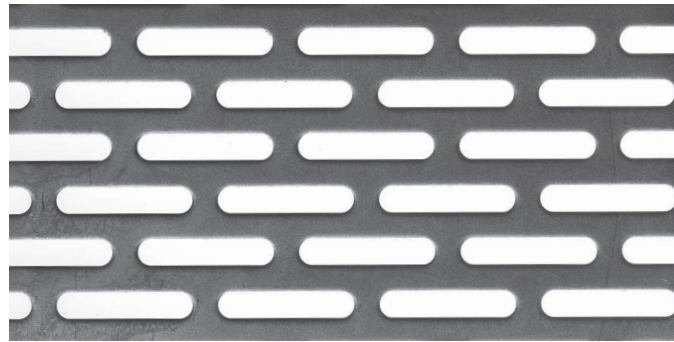
MATERIAL Aluminum
MAX WIDTH 47" (1200 mm)
OPEN AREA 43%
THICKNESS 0.125" (3.0mm)
APPLICATIONS Facades, Balustrade Infills, Decorative Panels & Ceiling Tiles

NICHE 10015



MATERIAL Aluminum
MAX WIDTH 60" (1500mm)
OPEN AREA 50%
THICKNESS 0.125" (3.0mm)
APPLICATIONS Applications: Parking Garage Screens & Facades

NICHE 250



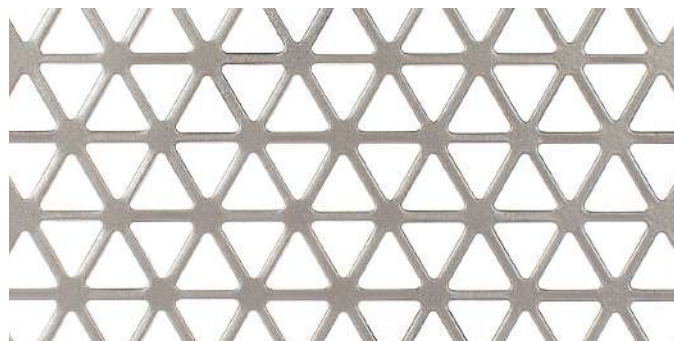
MATERIAL Aluminum, T304 (S/S), T316 (S/S)
MAX WIDTH 60" (1500mm)
OPEN AREA 40%
THICKNESS 0.05"-0.20" (1.2-5.0mm) (A)
 0.05"-0.10" (1.2-2.5mm) (S/S)
APPLICATIONS Facades, Security Screens, Infill Panels, Partitions & Balustrades

ORBIT 14



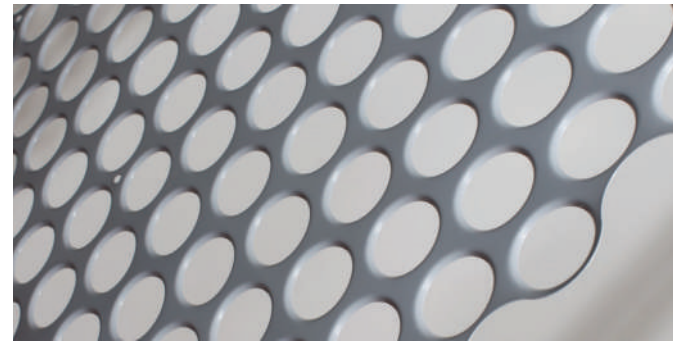
MATERIAL Aluminum
MAX WIDTH 47" (1200mm)
OPEN AREA 13%
THICKNESS 0.125" (3.0mm)
APPLICATIONS Balustrade Infills, Decorative Panels, Ceiling Tiles, Partitions & Privacy Screens

PRISM



MATERIAL Aluminum, Steel
MAX WIDTH 59" (1500mm)
OPEN AREA 62%
THICKNESS 0.12" (3.0mm) (A)
 0.08" (2.0mm) (S)
APPLICATIONS Parking Garage Screens, Facades, Balustrade Infills & Decorative Panels

ODYSSEY



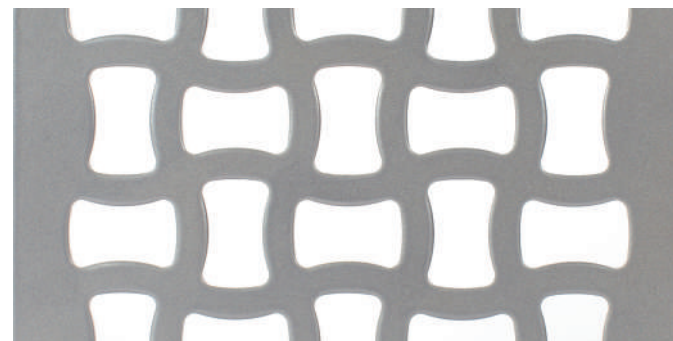
MATERIAL Aluminum, Steel
MAX WIDTH 47" (1200mm)
OPEN AREA 50%
THICKNESS .04" (1.0mm) (S)
 .06" (1.6mm) (A)
APPLICATIONS Parking Garage Screens, Ceiling Tiles, Facades & Partitions

ORBIT 19



MATERIAL Aluminum, Steel & Stainless Steel
MAX WIDTH 59" (1500mm)
OPEN AREA 23%
THICKNESS 0.12" (3.0mm) (A)
 0.08" (2.0mm) (S)
APPLICATIONS Balustrade Infills, Decorative Panels, Ceiling Tiles, Partitions & Privacy

RIBBON



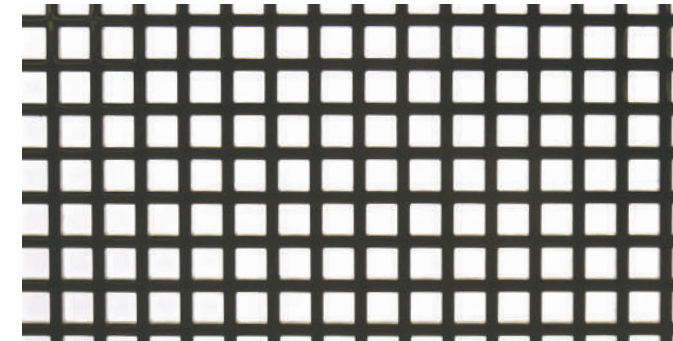
MATERIAL Aluminum
MAX WIDTH 59" (1500mm)
OPEN AREA 51%
THICKNESS 0.12" (3.0mm) - 0.20" (5.0mm)
APPLICATIONS Parking Garage Screens, Facades, Security Screens, Infill Panels, Partitions & Balustrades

RIVER



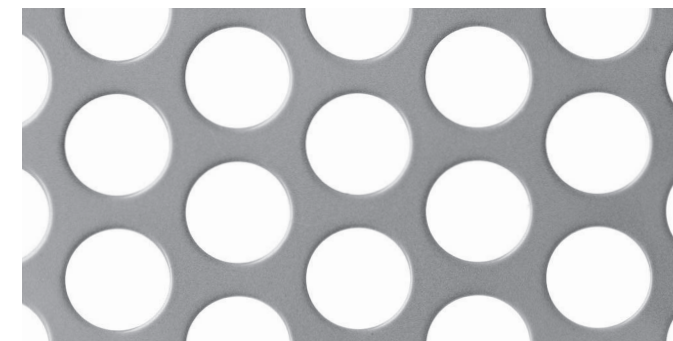
MATERIAL Aluminum
MAX WIDTH 60" (1500mm)
THICKNESS .06" (1.6mm)
APPLICATIONS Parking Garage Screens & Facades

STENCIL



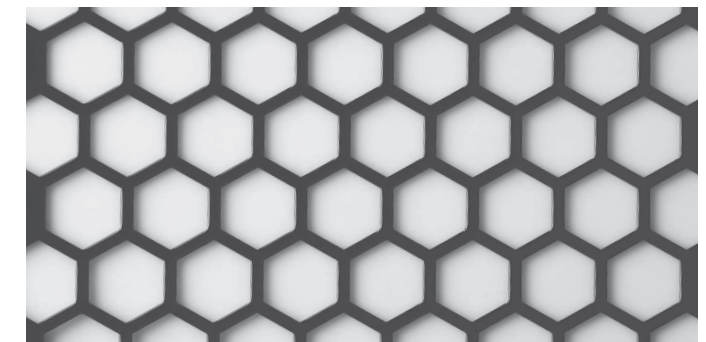
MATERIAL Aluminum
MAX WIDTH 60" (1500mm)
OPEN AREA 38%
THICKNESS 0.125" (3.0mm)
APPLICATIONS Facades, Balustrade Infills, Decorative Panels, Ceiling Tiles & Partitions

TITAN 190



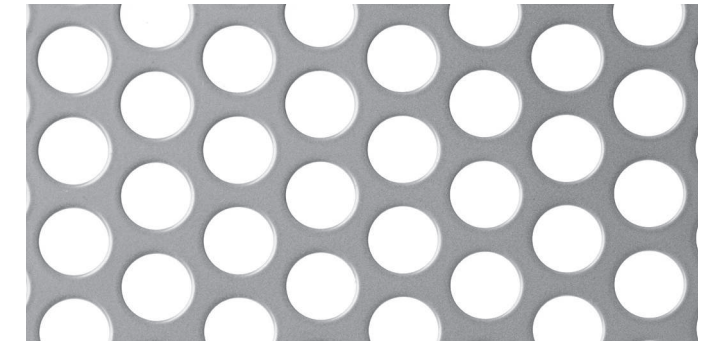
MATERIAL Aluminum, T304 (S/S), T316 (S/S)
MAX WIDTH 60" (1500mm)
OPEN AREA 51%
THICKNESS 0.06"-0.20" (1.6-5.0mm) (A)
 0.10"-0.20" (2.5-5.0mm) (S/S)
APPLICATIONS Parking Garage Screens, Facades, Security Screens, Infill Panels, Partitions & Balustrades

SHEER 2800



MATERIAL Aluminum, Steel
MAX WIDTH 47" (1200mm)
OPEN AREA 73%
THICKNESS 0.12" (3.0mm) (A)
APPLICATIONS Parking Garage Screens, Facades, Balustrade Infills, Decorative Panels & Ceiling Tiles

TITAN 120



MATERIAL Aluminum, T304 (S/S), T316 (S/S)
MAX WIDTH 60" (1500mm)
OPEN AREA 49%
THICKNESS 0.06" - 0.39" (1.6-10.0mm) (A)
 0.04" - 0.24" (0.9-6.0mm) (S/S)
APPLICATIONS Parking Garage Screens, Facades, Security Screens, Infill Panels, Partitions & Balustrades

ULTIMO



MATERIAL Aluminum, Steel & Stainless Steel
MAX WIDTH 59" (1500mm)
OPEN AREA 34%
THICKNESS 0.12" (3.0mm) (A)
 0.08" (2.0mm) (S)
 0.06" (1.5mm) (S/S)
APPLICATIONS Facades, Balustrade Infills, Decorative Panels, Ceiling Tiles & Partitions

Expanded

SUN20



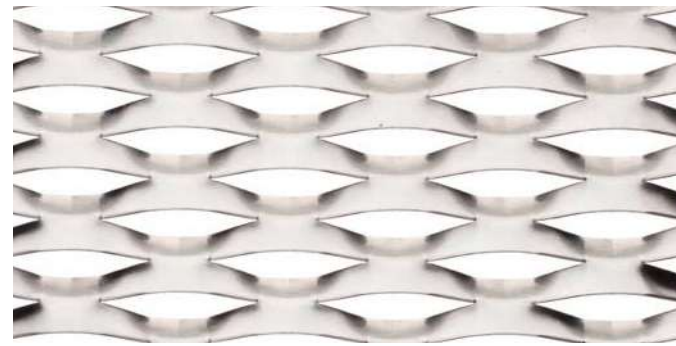
MATERIAL Aluminum, Galvabond, Steel, and Weathering Steel
WEIGHT .74 LB/FT² (3.6 KG/M²) (A)
 2.15 LB/FT² (10.5 KG/M²) (S)
NOMINAL SIZE OF MESH LWM 120 SWM 34
THICKNESS .06" (1.6mm); .08" (2.0mm); .125" (3.0mm)
OPEN AREA 35%
STOCK STATUS Custom Made

SUN919A



MATERIAL Aluminum, Weathering Steel
WEIGHT 1.30 LB/FT² (6.33 KG/M²) (A)
 3.67 LB/FT² (17.9 KG/M²) (WS)
NOMINAL SIZE OF MESH LWM 135 SWM 45
THICKNESS .125" (3.0mm)
OPEN AREA 25%
STOCK STATUS Ex Stock and Custom Made

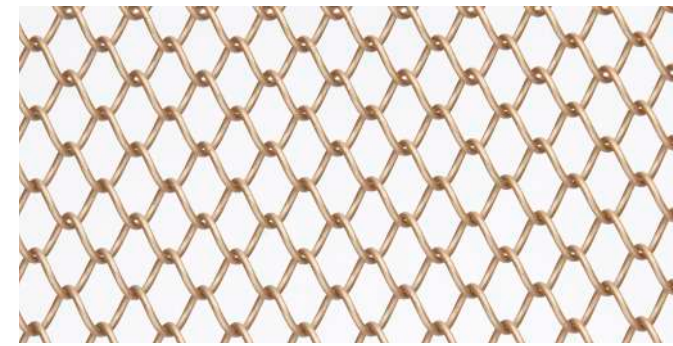
SUN636A



MATERIAL Aluminum, Galvabond, Steel
WEIGHT .74 LB/FT² (3.6 KG/M²) (A)
 1.99 LB/FT² (9.7 KG/M²) (S)
NOMINAL SIZE OF MESH LWM 75 SWM 30
THICKNESS .06" (1.6mm)
OPEN AREA 23%
STOCK STATUS Ex Stock and Custom Made

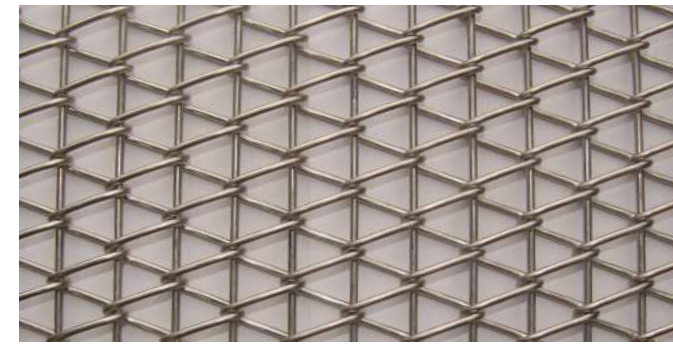
Wire Mesh

TRANSIT 100



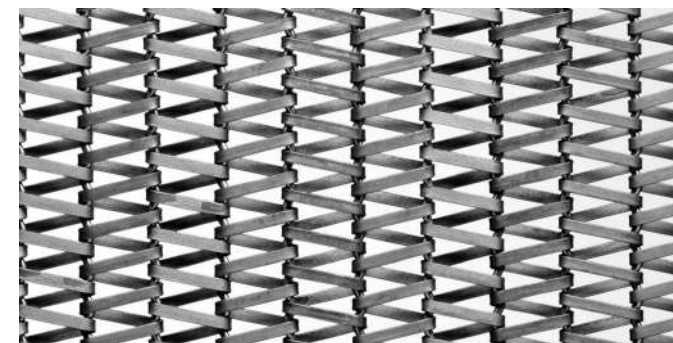
MATERIAL Stainless Steel & Mild Steel
MAX WIDTH 118" (3000mm)
OPEN AREA 74%
WEIGHT 0.78 LB/FT² (3.8 KG/M²)
APPLICATIONS Curtains, Internal Features

TRANSIT 223RR



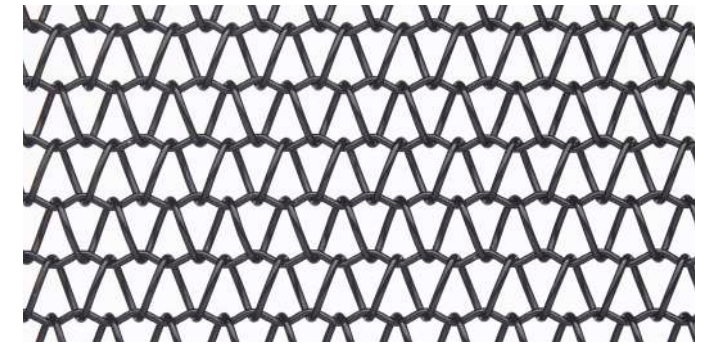
MATERIAL T316 (S/S)
MAX WIDTH 157.5" (4000mm)
WEIGHT 1.09 LB/FT² (10.8 KG/M²)
APPLICATIONS Building Facades, Curtain Ceilings

TRANSIT F281



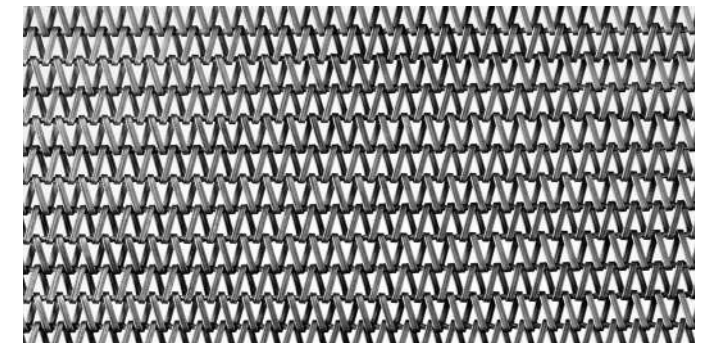
MATERIAL T316 (S/S), Mild Steel Painted
MAX WIDTH 118" (3000mm)
OPEN AREA 30%
WEIGHT 1.76 LB/FT² (8.6 KG/M²) (S/S)
APPLICATIONS Building Facades, Roller Curtains

TRANSIT 210



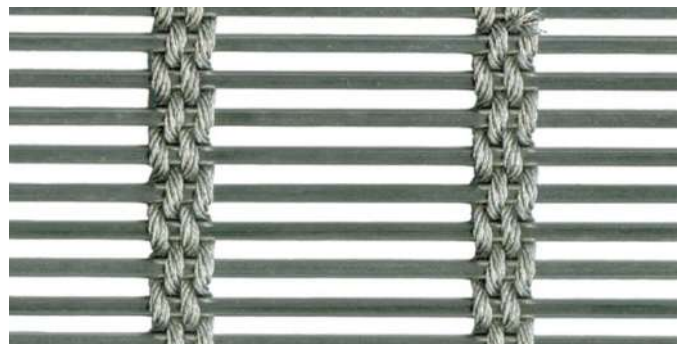
MATERIAL Mild Steel Painted, T316 (S/S), Brass
MAX WIDTH 197" (5000mm)
OPEN AREA 56%
WEIGHT 0.94 LB/FT² (4.56 KG/M²) (S/S) (S)
APPLICATIONS Building Facades, Curtain Ceilings

TRANSIT F160



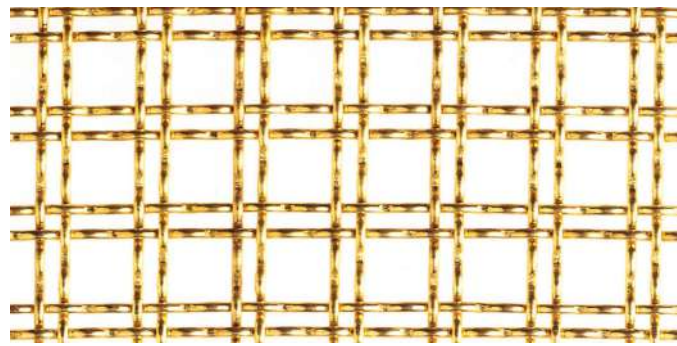
MATERIAL T316 (S/S)
MAX WIDTH 118" (3000mm)
OPEN AREA 19%
WEIGHT 2.09 LB/FT² (10.2 KG/M²)
APPLICATIONS Facades, Curtains & Sunshades

ALTUS



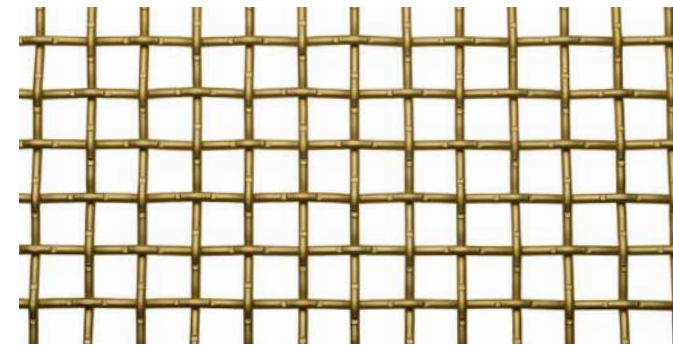
MATERIAL S/S T316, T304
MAX WIDTH 157" (4000mm)
OPEN AREA 40%
WEIGHT 2.3 LB/FT² (11.2 KG/M²)
APPLICATIONS Balustrade Infill Panels, Privacy Screens, Facades

ANTIQUITA



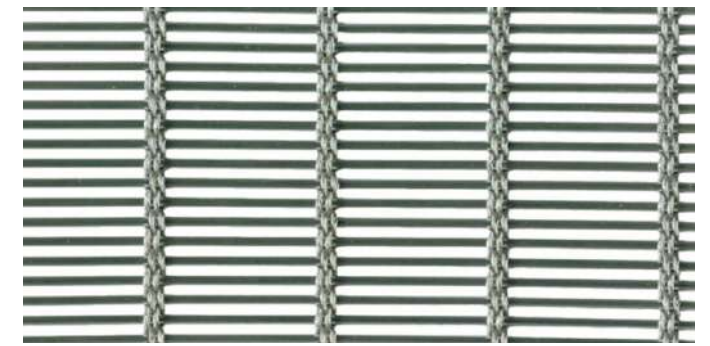
MATERIAL Brass
MAX WIDTH 94" (2400mm)
OPEN AREA 55%
WEIGHT .61 LB/FT² (2.99 KG/M²)
APPLICATIONS Infill Panels, Balustrades

BOSTON 743A



MATERIAL Aluminum
MAX WIDTH 94" (2400mm)
OPEN AREA 65.5%
WEIGHT .99 LB/FT² (4.85 KG/M²)
APPLICATIONS Security, Balustrades, Cladding

CIRRUS



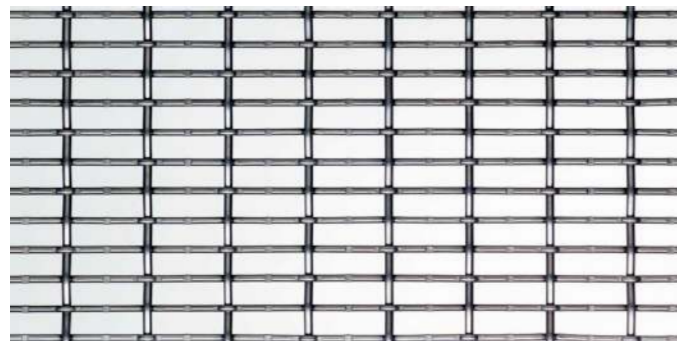
MATERIAL S/S T316, T304
MAX WIDTH 157" (4000mm)
OPEN AREA 44.3%
WEIGHT 1.07 LB/FT² (5.2 KG/M²)
APPLICATIONS Balustrades, Cladding, Facades, Interiors

ARGOS



MATERIAL S/S T316, T304
MAX WIDTH 157" (4000mm)
OPEN AREA 50.6%
WEIGHT 1.07 LB/FT² (5.2 KG/M²)
APPLICATIONS Balustrade Infill Panels, Privacy Screens, Facades

BOSTON 311



MATERIAL S/S T316, T304, Galvanized, Aluminum
MAX WIDTH 94" (2400mm)
OPEN AREA 63%
WEIGHT 1.67 LB/FT² (8.15 KG/M²)
APPLICATIONS Infill Panels, Screens, Soft Furnishings

CIVIC 520



MATERIAL S/S T316, Galvanized
MAX WIDTH 94" (2400mm)
OPEN AREA 55%
WEIGHT 1.99 LB/FT² (9.7 KG/M²)
APPLICATIONS Security, Balustrades, Cladding

CUMULUS



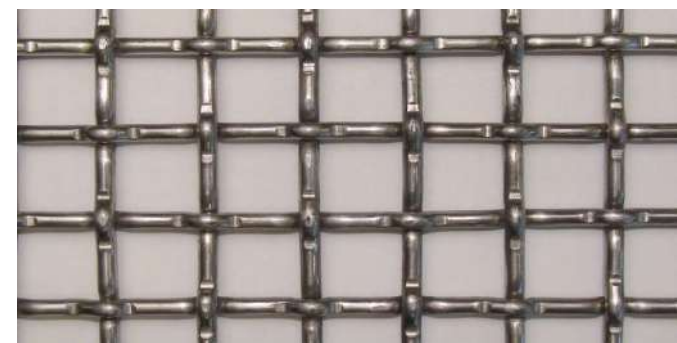
MATERIAL S/S T316, T304
MAX WIDTH 157" (4000mm)
OPEN AREA 61.5%
WEIGHT 1.93 LB/FT² (9.4 KG/M²)
APPLICATIONS Balustrades, Cladding, Facades, Interiors

BOSTON 705



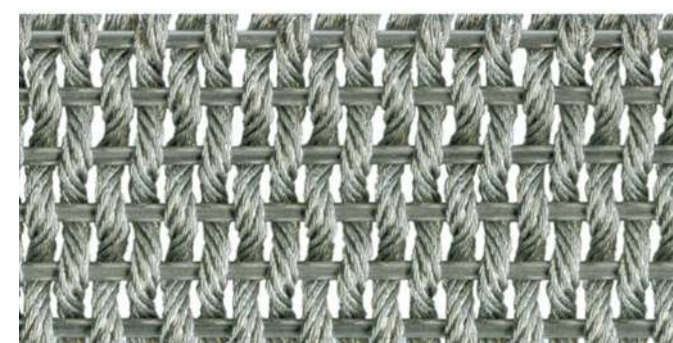
MATERIAL S/S T316, T304, Galvanized
MAX WIDTH 94" (2400mm)
WEIGHT 1.3 LB/FT² (6.2 KG/M²)
APPLICATIONS Security, Balustrades, Cladding

BOSTON 712A



MATERIAL Aluminum
MAX WIDTH 94" (2400mm)
OPEN AREA 64%
WEIGHT .55 LB/FT² (2.68 KG/M²)
APPLICATIONS Balustrade infill panels, Security Cladding, Privacy Screens, Facades

GENOA



MATERIAL S/S T316
MAX WIDTH 48" (1220mm)
OPEN AREA 21%
WEIGHT 3.03 LB/FT² (14.8 KG/M²)
APPLICATIONS Balustrades, Cladding, Facades, Interiors

IKON 205



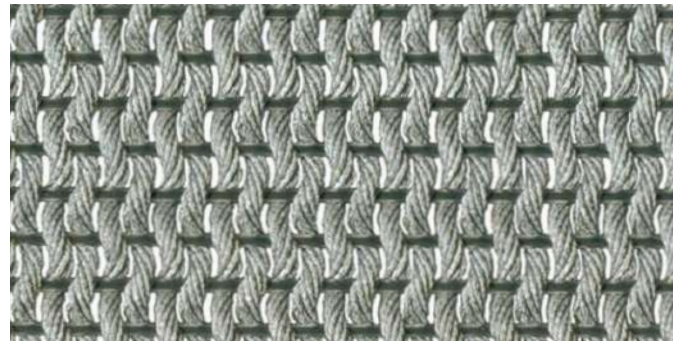
MATERIAL S/S T316, T304
MAX WIDTH 94" (2400mm)
OPEN AREA 69%
WEIGHT 1.25 LB/FT² (6.1 KG/M²)
APPLICATIONS Balustrades, Cladding

IKON 511



MATERIAL S/S T316, T304
MAX WIDTH 94" (2400mm)
OPEN AREA 69%
WEIGHT 1.52 LB/FT² (7.4 KG/M²)
APPLICATIONS Balustrades, Cladding

MERIDIAN



MATERIAL S/S T316, T304
MAX WIDTH 98" (2500mm)
OPEN AREA 31.7%
WEIGHT 1.07 LB/FT² (5.2 KG/M²)
APPLICATIONS Balustrades, Cladding, Facades, Interiors

STRATUS



MATERIAL S/S T316, T304
MAX WIDTH 157" (4000mm)
OPEN AREA 44%
WEIGHT 1.39 LB/FT² (6.8 KG/M²)
APPLICATIONS Infill Panels, Cladding, Screens, Infill Panels, Partitions & Balustrades

WEAVE 1020



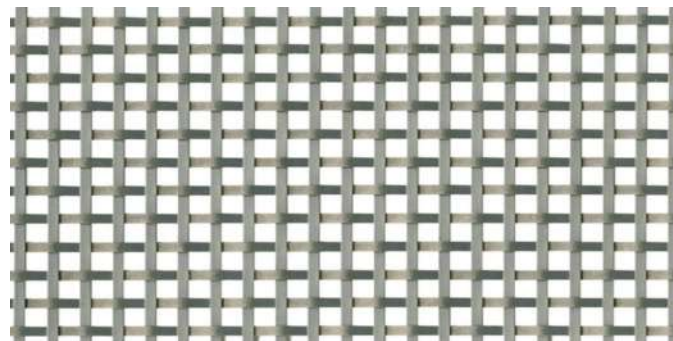
MATERIAL S/S T304
MAX WIDTH 60" (1525mm)
OPEN AREA 41%
WEIGHT .84 LB/FT² (4.11 KG/M²)
APPLICATIONS Balustrade Infill Panels, Privacy Screens, Facades

PLANAR 441 (A)



MATERIAL S/S T316, T304, Aluminum (A)
MAX WIDTH 94" (2400mm)
OPEN AREA 57%
WEIGHT .49 LB/FT² (2.4 KG/M²) (A)
 .98 LB/FT² (4.8 KG/M²) (S/S)
APPLICATIONS Ceilings, Balustrades, Cladding

QUAD 160



MATERIAL S/S T316, T304
MAX WIDTH 75" (1900mm)
OPEN AREA 42.3%
WEIGHT .57 LB/FT² (2.8 KG/M²)
APPLICATIONS Balustrades, Infill Panels, Facades, Interiors, Cladding

QUAD 306



MATERIAL S/S T316, Brass
MAX WIDTH 94" (2400mm)
OPEN AREA 38%
WEIGHT 1.45 LB/FT² (7.1 KG/M²) (S/S)
APPLICATIONS Balustrades, Cladding, Privacy Screen

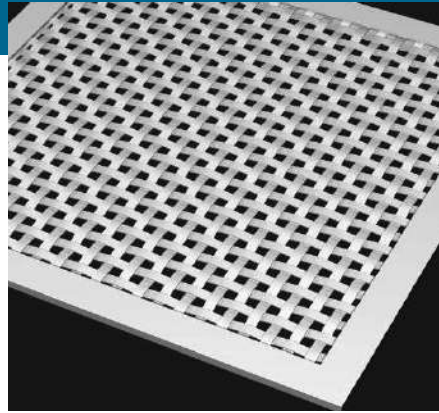
QUAD 907



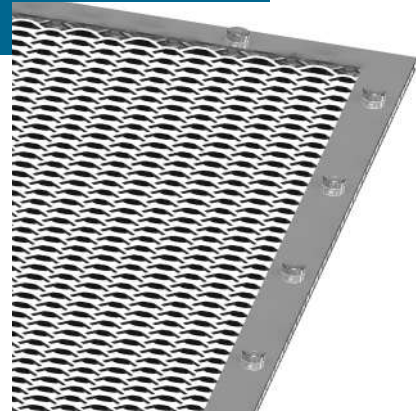
MATERIAL S/S T316, T304
MAX WIDTH 94" (2400mm)
OPEN AREA 28%
WEIGHT 2.07 LB/FT² (10.1 KG/M²)
APPLICATIONS Parking Garage Screens, Facades, Security Screens, Infill Panels, Partitions & Balustrades

Attachment Systems

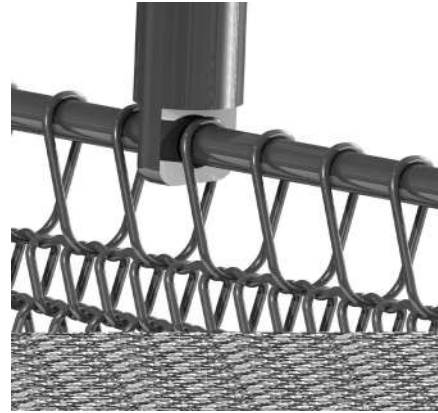
Our attachment systems are held to the same high standards for personality and functionality as every other product we create.



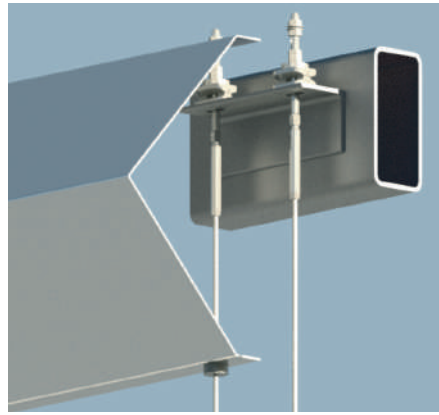
L3.0A CAP SYSTEM



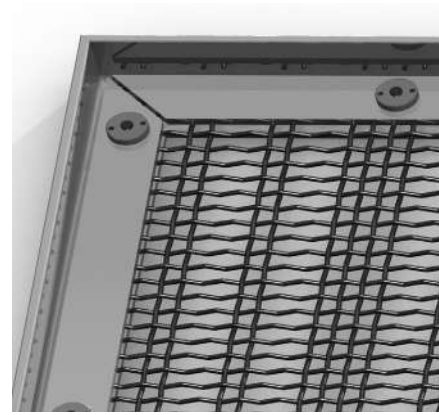
L2.0A FLAT BAR SYSTEM



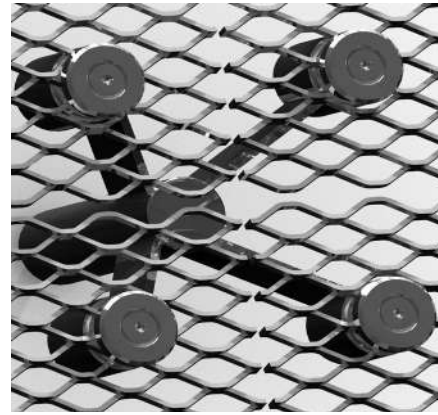
L5.1A PETITE APERTURE TENSION SYSTEM



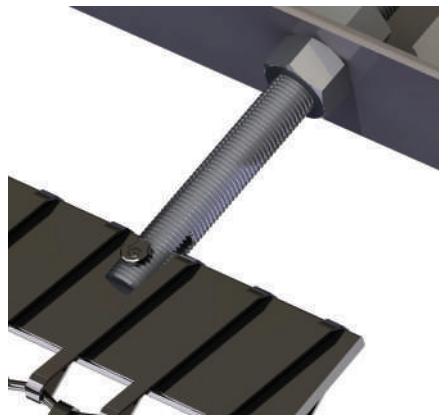
LA 100.1 ATMOSPHERE SYSTEM



L1.0A ANGLE SYSTEM



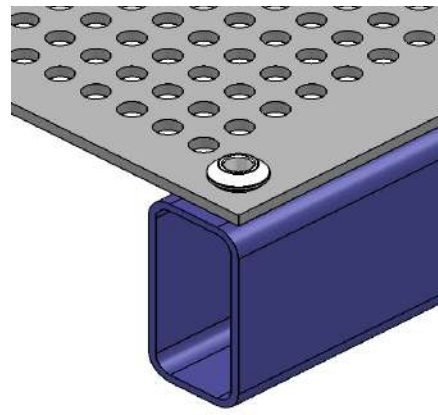
L4.0A SPIDER SYSTEM



L5.2 LARGE APERTURE SYSTEM



EC1 CLAMP



ISOLATOR